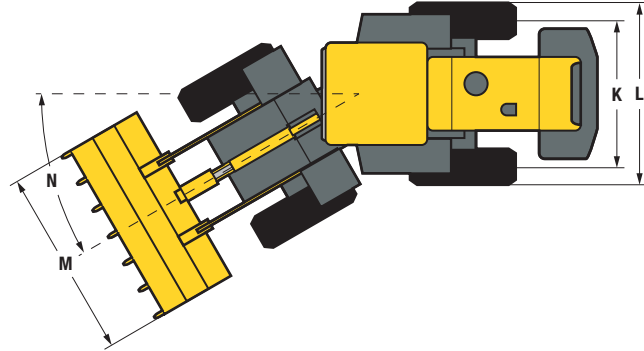
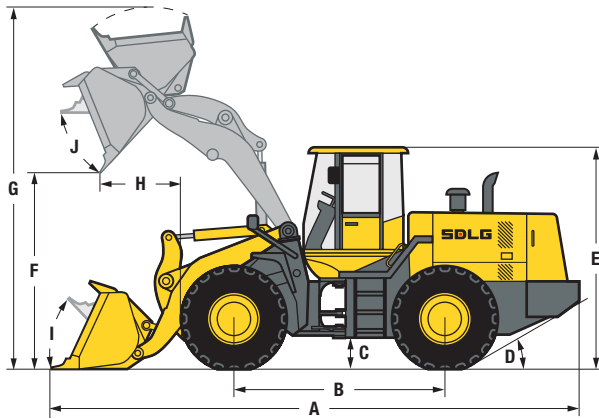




Wheeled Loader L953F



Description	Specification
Operating weight	16 930 kg
Standard bucket capacity	3.0 m ³
Lift capacity (rated load)	5 000 kg
Maximum breakout force	175 kN
Dimensions	
A. Overall length	8 050 mm
B. Wheel base	3 000 mm
C. Ground clearance	534 mm
D. Approach angle back	30°
E. Overall height	3 423 mm
F. Dump height	3 040 mm
G. Overall operating height	5 435 mm
H. Dump reach	1 150 mm
I. Roll back angle ground level	49°
J. Roll back level full height	45°
K. Track width	2 250 mm
L. Machine width	2 845 mm
M. Bucket width	3 024 mm
N. Steering angle	35°
Engine	
Model	Weichai WD10G220E23
Type	Watercooled, 4 stroke, 6 cylinders in line, direct injection, turbo charged
Rated power (SAE J1349)	162 kW @ 2 000 rpm
Maximum torque	980 Nm
Cylinder bore stroke	126 / 130 mm

Description	Specification
Transmission	
Type	SDLG Planetary Powershift
Number of gears	2 forward, 1 reverse
Maximum travel speed	Forward 38 km/h Reverse 17 km/h
Drive type	4 wheel drive
Tyre dimension	23.5 - 25
Tyre pressure	Front 55 - 58 psi Rear 46 - 49 psi
Service brake type	Air over hydraulic dry disc brake
Parking brake	Electric pneumatic caliper
Service fill capacities	
Fuel	260 L
Hydraulic oil	240 L
Axles (main and final drives)	2 × 26 L
Engine	20 L
Transmission	45 L
Brake system	4 L
Hydraulics	
Type	Gear pump
Boom lift time	5.8 sec
Total cycle time	10 sec