

## Wheeled Loader LG946L



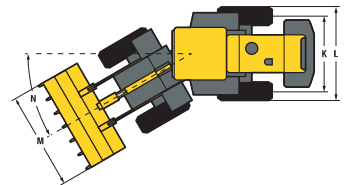
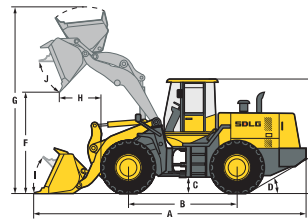
### LG946L

Powered by the Weichai Deutz engine and equipped with a smooth power shift transmission, the 12.7 tonne LG946L is an excellent utility machine. It has a robust structure and easy, comfortable single joystick operation. All SDLG wheeled loader models are rigorously tested to ensure reliability in action.

- The box structure frame of the LG946L gives best-in-class robustness.
- The access panels on the rear of the machine swing outwards to make daily checks and maintenance much easier.
- Single joystick operation of loader arm and bucket for easy and comfortable operation.

There is a wide range of attachments available for the LG946L including:

- Different size standard buckets
- Side tip bucket
- Multi-function bucket (4-in-1)
- Pallet forks
- Log grapples
- Snow blade
- Attachment bracket and associated attachments



Description	Specification
Operating weight	12 700 kg
Standard bucket capacity	2.3 m <sup>3</sup>
Lift capacity (rated load)	4 000 kg
Static tipping load at full turn	8 155 kg
Maximum breakout force	125 kN
<b>Dimensions</b>	
A. Overall length	7 295 mm
B. Wheel base	2 880 mm
C. Ground clearance	440 mm
D. Approach angle back	28°
E. Overall height	3 240 mm
F. Dump height	2 950 mm
G. Overall operating height	4 897 mm
H. Dump reach	1 055 mm
I. Roll back angle ground level	45°
J. Roll back level full height	62°
K. Track width	2 054 mm
L. Machine width	2 574 mm
M. Bucket width	2 766 mm
N. Steering angle	38°
<b>Engine</b>	
Model	Weichai Deutz WP6G160E201
Type	Watercooled, 4 stroke, 6 cylinders in line, direct injection, turbo charged
Rated power (SAE J1349)	118 kW @ 2 000 rpm
Maximum torque	640 Nm
Cylinder bore stroke	105 / 130 mm

Description	Specification
<b>Transmission</b>	
Type	Countershaft-type, electro-hydraulic shift
Number of gears	2 forward, 1 reverse
Maximum travel speed	Forward 38 km/h Reverse 17 km/h
Drive type	4 wheel drive
Tyre dimension	20.5 - 25
Tyre pressure	Front 48 - 51 psi Rear 41 - 42 psi
Service brake type	Dry disc brake
Parking brake	Air operated internal expansion
<b>Service fill capacities</b>	
Fuel	140 L
Hydraulic oil	124 L
Axles (main and final drives)	2 × 26 L
Engine	18 L
Transmission	44 L
Brake system	4 L
<b>Hydraulics</b>	
Type	Single lever hydraulic pilot control
Boom lift time	5.7 sec
Total cycle time	10.2 sec